



BUILT:

YEAR	:	31 ST JULY 2009
BUILDER	:	GRANDWELD, DUBAI - U.A.E
CLASS	:	ABS
FLAG	:	KINGSTOWN
IMO No	:	9549695
CALL SIGN	:	J8B4076

PERFORMANCE:

SPEED (MAX)	:	22 KNOTS
SPEED: (CRUISING)	:	20 KNOTS
CONSUMPTION	:	120 USG/H
DECK SPACE	:	120 M ²
DECK LOAD	:	50 TONNES
DECK LOADING AT STERN	:	2 TON/M ²
DECK CARGO	:	30 TONNES

DIMENSIONS:

LENGTH (OVERALL)	:	41.00 M
BREADTH (MOULDED)	:	7.30 M
DEPTH (AT MIDSHIP)	:	3.50 M
DRAFT LOADED	:	1.75 M
GROSS TONNAGE	:	246
NET TONNAGE	:	73

CAPACITIES:

FUEL OIL	:	15000 USG
FRESH WATER	:	10000 USG
LUBE OIL	:	300 USG
HYD. OIL	:	50 USG
BLACK WATER	:	300 USG
GREY WATER	:	300 USG
FOAM	:	100 USG
DISPERSANT	:	100 USG

PROPULSION – MACHINERY:

MAIN ENGINES	:	3 x CAT, MODEL C32
OUTPUT / RPM	:	4009 BHP @ 2300 RPM
GEAR BOXES	:	TWIN DISC MGX 6650 2.93:1 RATIO
ENGINE CONTROL	:	ZF PNEUMATIC CONTROL
FIXED PITCH PROPELLERS	:	3 x FIVE BLADE, NI-AL-BR
AUX. GENERATOR SETS	:	2 x 84 CAT GEN SET C4.4 380V 50HZ 3 PH

STEERING SYSTEM	:	KOBELT -HYDRAULIC
BOW THRUSTER	:	1x 75HP, THRUST 1.6TONS

ACCOMMODATION:

(CENTRAL AIR-CONDITIONING SYSTEM)		
ACCOMMODATION	:	8 CREW + 2 PASSENGER IN CABIN
Offshore Personnel	:	58 CAPACITY (BEURTEAUX SEATS)

DECK EQUIPMENT:

ANCHOR CAPSTAN	:	1 x HYPAC HHAW 15 - 16
ANCHOR	:	1 x FORTRESS ANCHOR
FENDERING	:	ALUM PIPE "D" FENDER + TYRES
DECK CRANE	:	2 TONS, MODEL P15000 L/4SI

AUXILLIARY MACHINERIES & OTHER EQUIPMENT

OILY WATER SEPARATOR	:	1 X 0.5 M ³ /H X 15 PPM
FUEL OIL PURIFIER	:	1 X 1150 LTR/HR
FW & SW HYDROPHORE	:	2 X 100 Ltr Tk With 2 Pumps 3 M ³ /H X 30 M - AZCUE PUMP
WATER HEATER	:	1 X 200 LTR CAPACITY
FIRE & GS PUMP	:	1 X 30 M ³ /H X 40 M - AZCUE PUMP
STARTING AIR COMPRESSOR	:	1 X 3 M ³ /H X 30 BAR - NK 2 X 355 Ltr Air Receiver - NK
Bilge Pump	:	1 X 30 M ³ /H X 30 M - Azcue Pump
FW Transfer Pump	:	1 X 25 M ³ /H X 30 M, - Azcue Pump
Sewage Pump	:	1 X 1 M ³ /H X 15 M - AZCUE PUMP
SLUDGE PUMP	:	1 X 2 M ³ /H X 30 M - Azcue Pump
Emergency Fire Pump	:	1 X 30 M ³ /H X 38 M DIESEL ENGINE DRIVEN
SEWAGE TREATMENT PLANT	:	1 X 1960 LTRS / DAY
FUEL OIL TRANSFER PUMP	:	21 X 6 M ³ /H X 20 M - AZCUE PUMP
FRESH WATER CARGO PUMP	:	1 X 25 M ³ /H X 35 M - AZCUE PUMP
Fuel Oil & FW Flow Meter	:	1 Each
FUEL OIL CARGO PUMP	:	1 X 25 M ³ /H X 25 M - AZCUE PUMP

ELECTRONICS / NAVIGATION EQUIPMENT

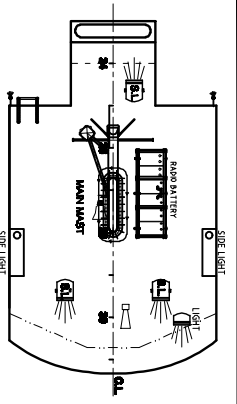
RADAR	:	2 x RADAR KODEN, 48 NM,
ECHO SOUNDER	:	1 x JMC JAPAN, V-6202
GYRO COMPASS	:	1 x YOKOGAWA, CM2 700B
AUTO PILOT	:	1 x COMNAV, COMPILOTM COMMANDER H480426
MAGNETIC COMPASS	:	1 x DIRIGO
DGPS	:	1 x KODEN, KGP 913D
EPIRB	:	1 x ACR, RLB-32, SAT2, 406 CAT1
VHF Radio	:	2 x VHF RT2048, SAILOR
SSB Radio	:	STR 6000A DSC VHF
SART TRANSPONDER	:	ACR, USA
Walkie Talkie	:	2 x Standard Japan Model HX370
PUBLIC ADDRESS SYSTEM	:	1 x PHONTECH – NORWAY CIS3100
ELECTRIC HORN	:	1 x ELECTRIC HORN
NAVTEX RECEIVER	:	1 x SAMYUNG KOREO, SNX 300
Wind Speed Indicator	:	1 x Vetus Holland, WSD 834

SAFETY EQUIPMENT

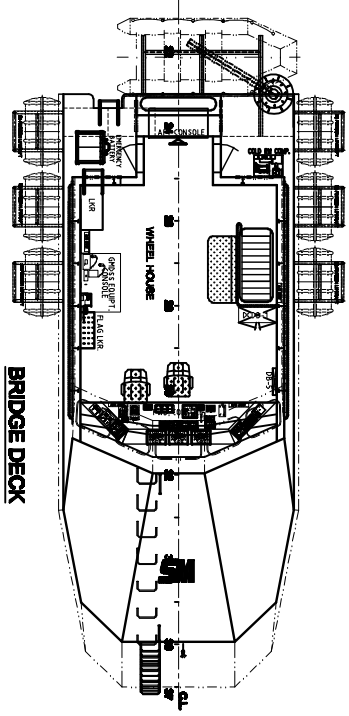
Rescue Boat with Davit for 6 Person

FIFI :1200 M3/Hr with One monitor

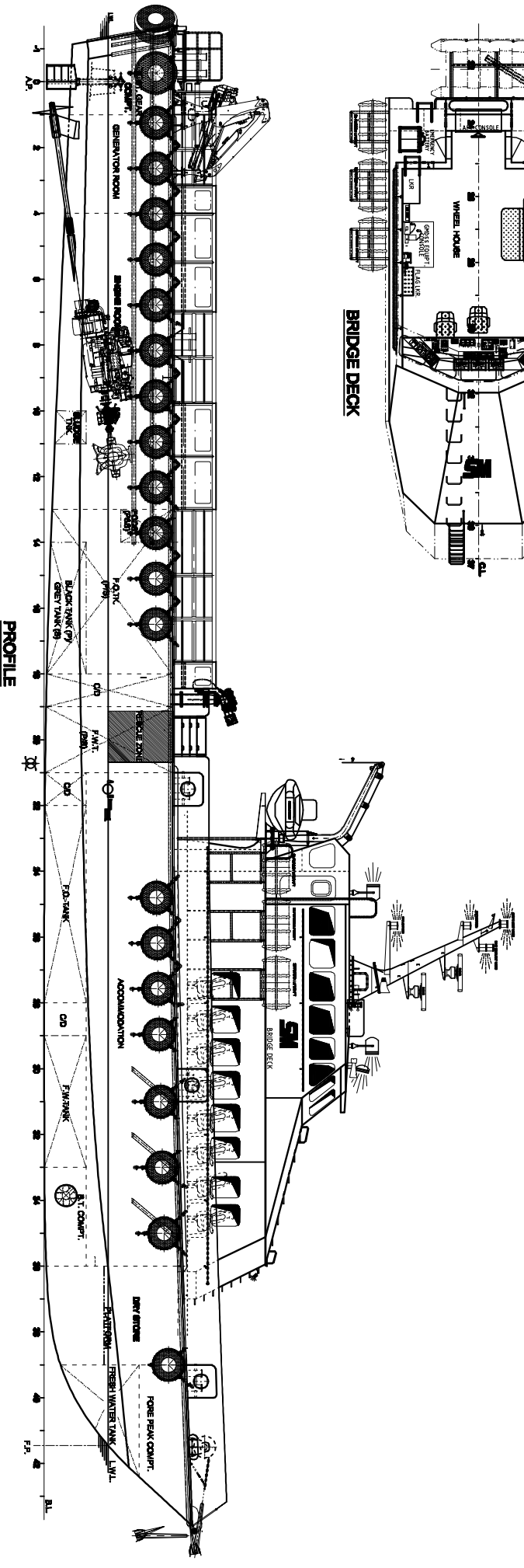
SAFETY EQUIPMENT IN ACCORDANCE WITH SOLAS AND FLAG REQUIREMENT



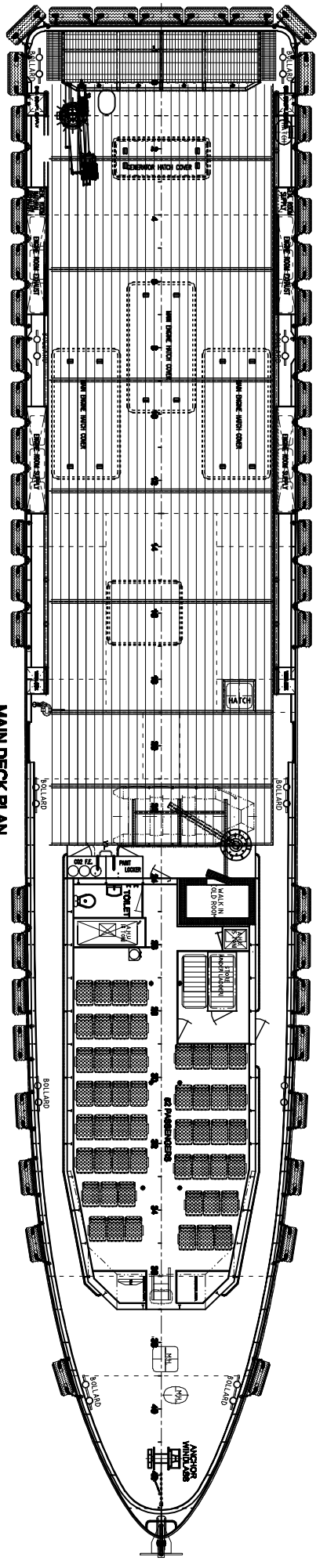
WHEEL HOUSE TOP



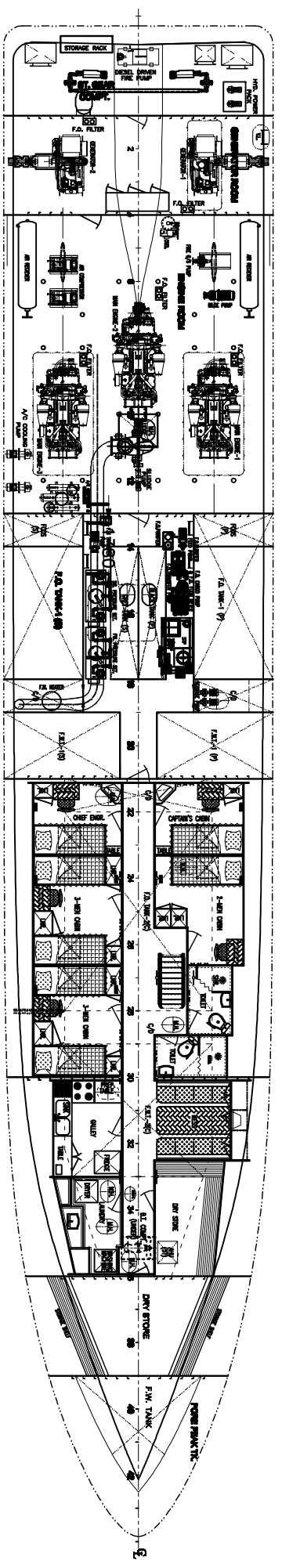
BRIDGE DECK



PROFILE



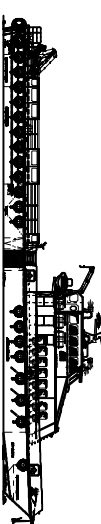
MAIN DECK PLAN



BELOW DECK PLAN

MAIN PARTICULARS	
LENGTH OVERALL	41.00 M.
L.B.P.	37.30 M.
BREADTH	7.30 M.
DEPTH	3.30 M.
DRAFT, HULL	1.75 M.
HULL	ALUMINIUM
DECK AREA	125 M ²
DECK STRENGTH	2 T/SQM
DECKLOADS	30 TONS
CREW	8
VIP PERSONNEL	2
SEATING CAPACITY	52
MAIN ENGINES	3 X CATERPILLAR C 32 HEAVY DUTY RATINGS DEVELOPING 1400 BHP @ 2000RPM
GENERATORS	2 X CATERPILLAR CH4 85 KW @ 1500RPM 380V, 50 HZ, 3PH.
BOW THRUSTER	1 X 75HP @ 1500RPM KEY POWER BOW THRUSTER IP - 18
CAPACITIES:	
FUEL OIL	6000 LITRES (15,673 USG)
FRESH WATER	4400 LITRES (11,623 USG)
LUB OIL	500 LITRES (132 USG)
HYDRAULIC OIL	100 LITRES (27 USG)
DIRTY WATER GENERATION TANK	500 LITRES (132 USG)
BLACK AND GREY WATER	2500 LITRES (661 USG)

AS FITTED



GRAND WELD
SPECIALIZING IN SERVICE/REPAIRS/MAINTENANCE AND MANUFACTURING SHIP
FIBER 24/7S DAILY (U.S. ESTABLISHMENT) 24/7S

41M ALUMINIUM CREW BOAT
(STANFORD MARINE)

GENERAL ARRANGEMENT

NO.	DESCRIPTION	DATE	BY	APP'D	REV.
01	AS FITTED REPRESENTATIVE REPRESENTED				
02	REVISIONS				

DESIGNED BY: JAHN
CHECKED BY: SILLIK
APPROVED BY: OLL

DATE: 11/21/11

STANFORD MARINE, LLC

THIS DRAWING IS THE PROPERTY OF STANFORD MARINE, LLC. IT IS TO BE USED ONLY FOR THE PROJECT AND VESSEL SPECIFICALLY IDENTIFIED HEREON. IT IS NOT TO BE REPRODUCED OR TRANSMITTED IN ANY FORM OR BY ANY MEANS, ELECTRONIC OR MECHANICAL, INCLUDING PHOTOCOPYING, RECORDING, OR BY ANY INFORMATION STORAGE AND RETRIEVAL SYSTEM, WITHOUT PERMISSION IN WRITING FROM STANFORD MARINE, LLC.