

# STANFORD BREAM

## 48 M ANCHOR HANDLING TUG



### BUILT:

Year Built	2009
Classification	ABS
Flag	St. Vincent
Off No. / Call sign	330999/ 9WHK9
Builder	Sea link Shipyard, Miri
Registry	Port Kingstown
Designer	Khiam Chuan, Singapore

### PRINCIPAL DIMENSION:

Length Overall	48.00 M
Length waterline	45.56 M
Length B.P.	43.77 M
Breadth Moulded	13.20 M
Depth Moulded	05.20 M
Designed Draft	04.20 M
GRT/NRT	1039/311

### MACHINERY / PROPULSION:

Main Engine	2 x CAT 3516 BTA c / w gear box
Output Hp	2 x 2575 BPH
Gear Box	2 x LAF 873 L
Gear Ratio	7.455/1
Fresh / Seawater pressure set	3 x Grundfos GTH-18V
Fitted Propeller	2 x ø2650x2575 CuNiAl Bronze , 4 blades
Kort Nozzle	2 x ø2650 x 12 mm Steel
Tail Shaft	2 x BCP690 X 400 Forged Steel
Intermediate Shaft	Forged Steel
Emergency Generator Cummins	3 x KTA19 DMI 380 kw
Emergency Generator	1 x Yanmar ECO 321-2L/4 , 60 kva 2 x Max pressure 14m 100FH Flow rate 180 GPH
Racor filter	TMC spa Type SC17FM3
Working Air compressor	1 x Alfa Laval, MAB 104B-14/24
Fuel Oil Purifier	2 x Swan, FBFC -2 units FRP1051 BAA/04X2-1pc
Starting Air Compressor	Joven , JH91 , horizontal
Heater tank	Ripple plate Int.Model MT5- 1pc Hand Pump L.O tank/ FO transfer Sigma Pump
Freezer / Chiller Compressor	3 x 90KW , P4111/P3x90+1x95-SV-C
HPU for deck Machinery	2 x Central A/C unit – Ripple plate-
AC compressor	

### PERFORMANCE:

Speed	11 Knots
Endurance	30 Days
BP	70 Tons
Range	7920 NM

### PUMPS

Air-cond Cooling Pump	45 M <sup>3</sup> /hr Pump
Freeze / Chiller Cooling Pump	25 M <sup>3</sup> /hr Pump
Cooling Pump for HPU P/pack deck	25 M <sup>3</sup> /h
GS/ Fire pump	35 M <sup>3</sup> /hr
Fuel Oil Cargo Pump	130 M <sup>3</sup> /hr
Fresh Water Cargo Pump	100 M <sup>3</sup> /hr
Fire Fighting Pump	35 M <sup>3</sup> /hr
FIFI / Fire Fighting Pump	1500 M <sup>3</sup> / hr x 110m
Bilge Pump / Ballast Pump	50 M <sup>3</sup> /hr
Fuel Oil Transfer Pump	10 M <sup>3</sup> /hr
Dirty Oil Pump	2 M <sup>3</sup> /hr
GS/ Fire pump	35 M <sup>3</sup> /hr
Fuel Oil Purifier pump	MAB 104B-14/24
Chain Locker pump	Pacer Pump

### TANK CAPACITY

Fuel Tanks	630 M <sup>3</sup>
Fresh Water	235 M <sup>3</sup>
Potable / Ballast Water	94 M <sup>3</sup>
Lib Oil	2 Tons
Foam	12 M <sup>3</sup>
Dispersant	12 M <sup>3</sup>

### RADIO & NAVIGATIONAL EQUIPMENT:

Magnetic Compass	SR-150 Reflector Magnetic Compass
VHF Radio Telephone	Furuno FM-8800D/8800S
Gyro Compass	Tokimec, Model TG 8000/8500
Radio Telephone	Furuno SSB FS1570, FS-2570
Autopilot	Simrad AP 50
Sound Powered Telephone System	Vingtor VSP Batteries
Navigation Radar	IMO approved Furuno , Type FR-1500 and 2nd radar model 1932 MAR-2
Public Address/Talkback System	Vingtor ETB-100/VMP 430 Talkback
Speed Log	Furuno , Model DS-80
NavTEX Receiver	JMC , NT-2000
Echo Sounder	Marina, Japan, Type F-2000
Inmarsat C- SSAS	Furuno, IC-306, IC-305, LRIT built in
Global Positioning System	Furuno DGPS/ GPS GP-37/ GP-32
Automatic Identification System	Furuno Model FA-150 -1pc
Navigation Light Panel	Aqua Signal
Wind speed & Direction Indicator	Model 06206
Horn	Marco Type5.423
GMDSS Radio System	JMC , model – RT-2500
Search Light	Imax 2000 W
Main Engine Control	NMS6000 Joystick,-USA
Tracking System	Skywave DMR-200
EPiRB	GME, Model – MT403FF
Mini M	Sailor TNT TT3064A
SART	Model – S701,
CCTV- Towing winch	Gadmei TV5821E

### DECK EQUIPMENT:

Anchor Windlass	4.9 T x 11 m/min
Tugger Winch	10 T x 15 m/min
Capstan	5 T x 15 m/min
Anchor Chain	34mm x 27.5m
Towing Winch	10 layer, rated pull 69 T, P411 AHTW/WF 150/200
Stockless Anchor	AC 14 HPP anchor 1080Kgs 2 pcs
Shaft Jaw	PS-350MTSJ , 350MT
Deck Crane	West Marine, 2 Ton radius min/ max 1.9/ 6.0m
Stern Roller	PC-SR/200-040/016 ø1800
Store rope reel	1000m x 56mm
Tow Pins	PS-200MTTA , 200MT

### SAFETY EQUIPMENT:

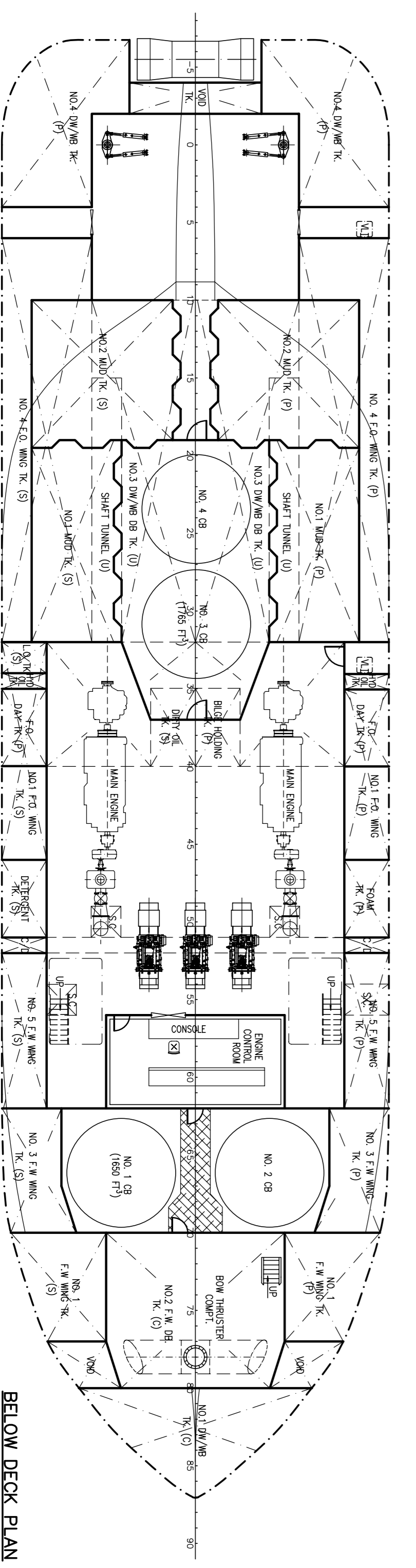
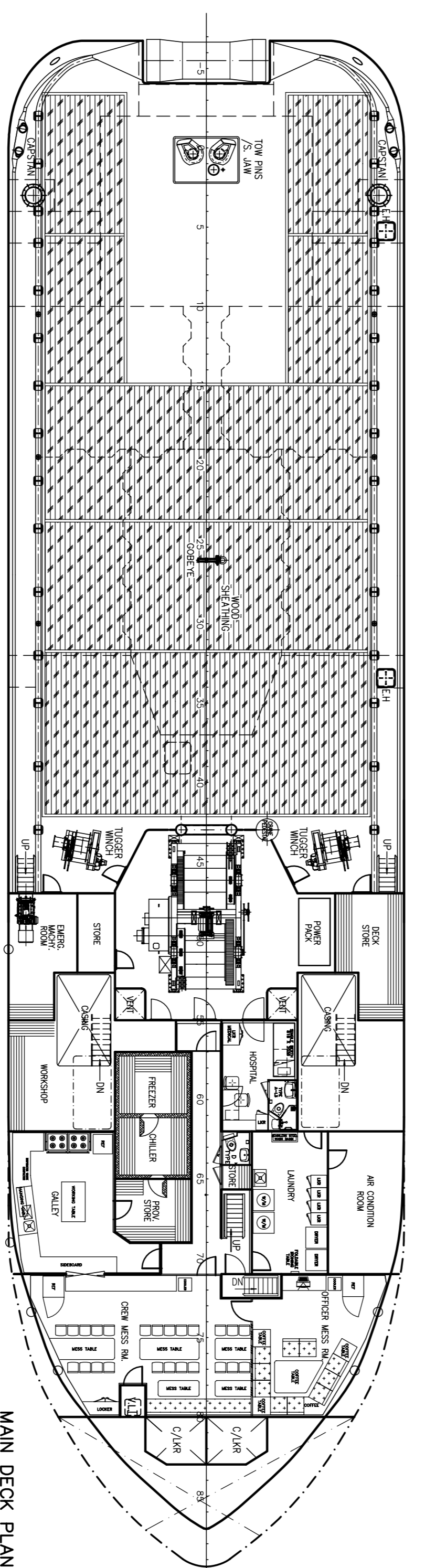
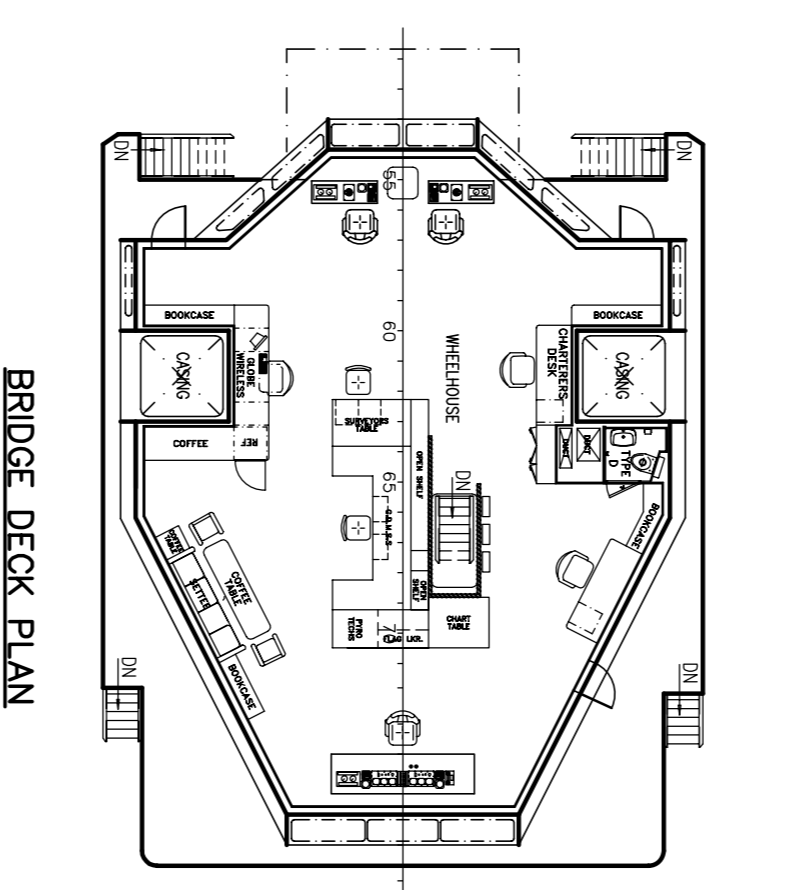
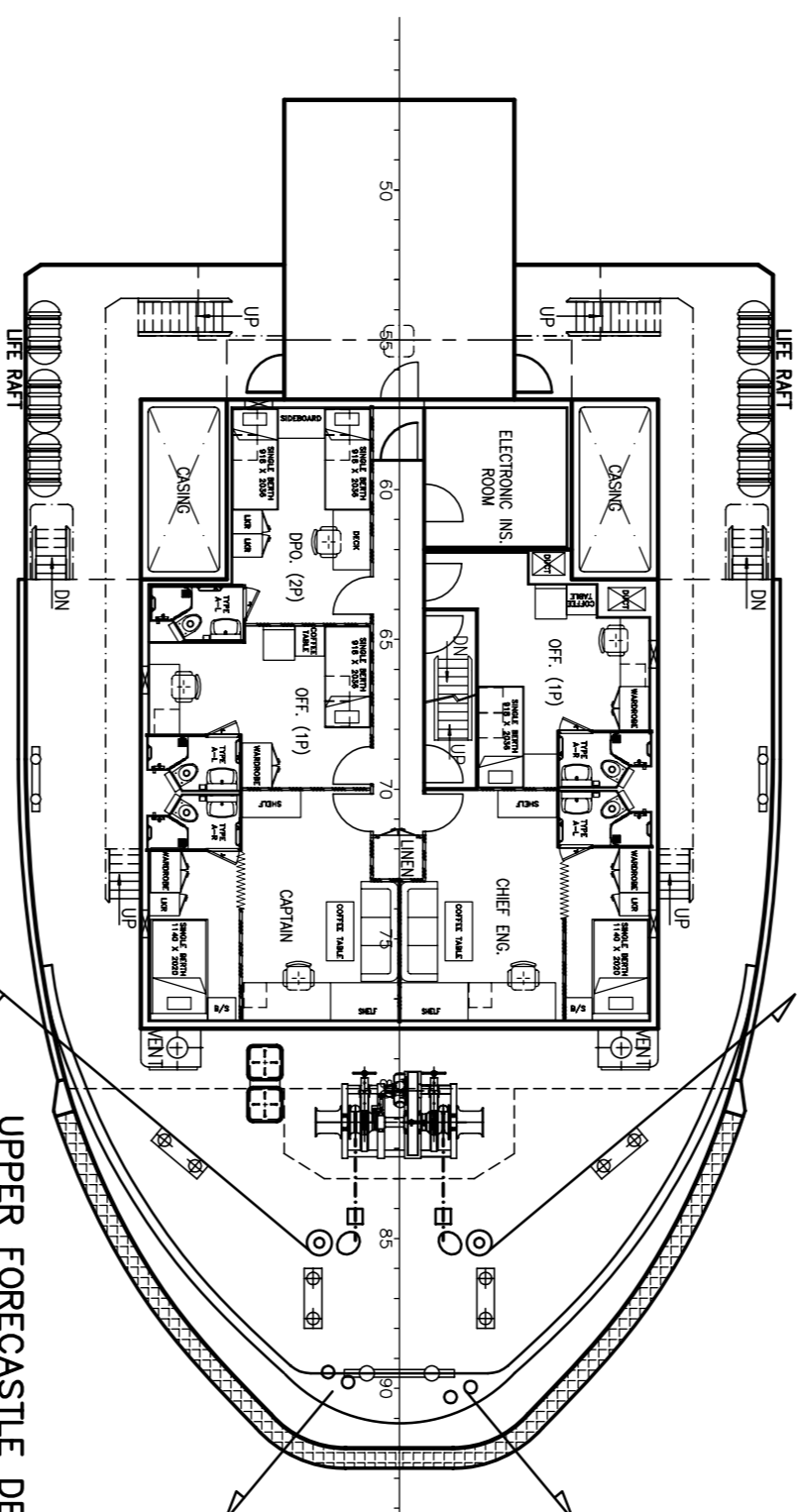
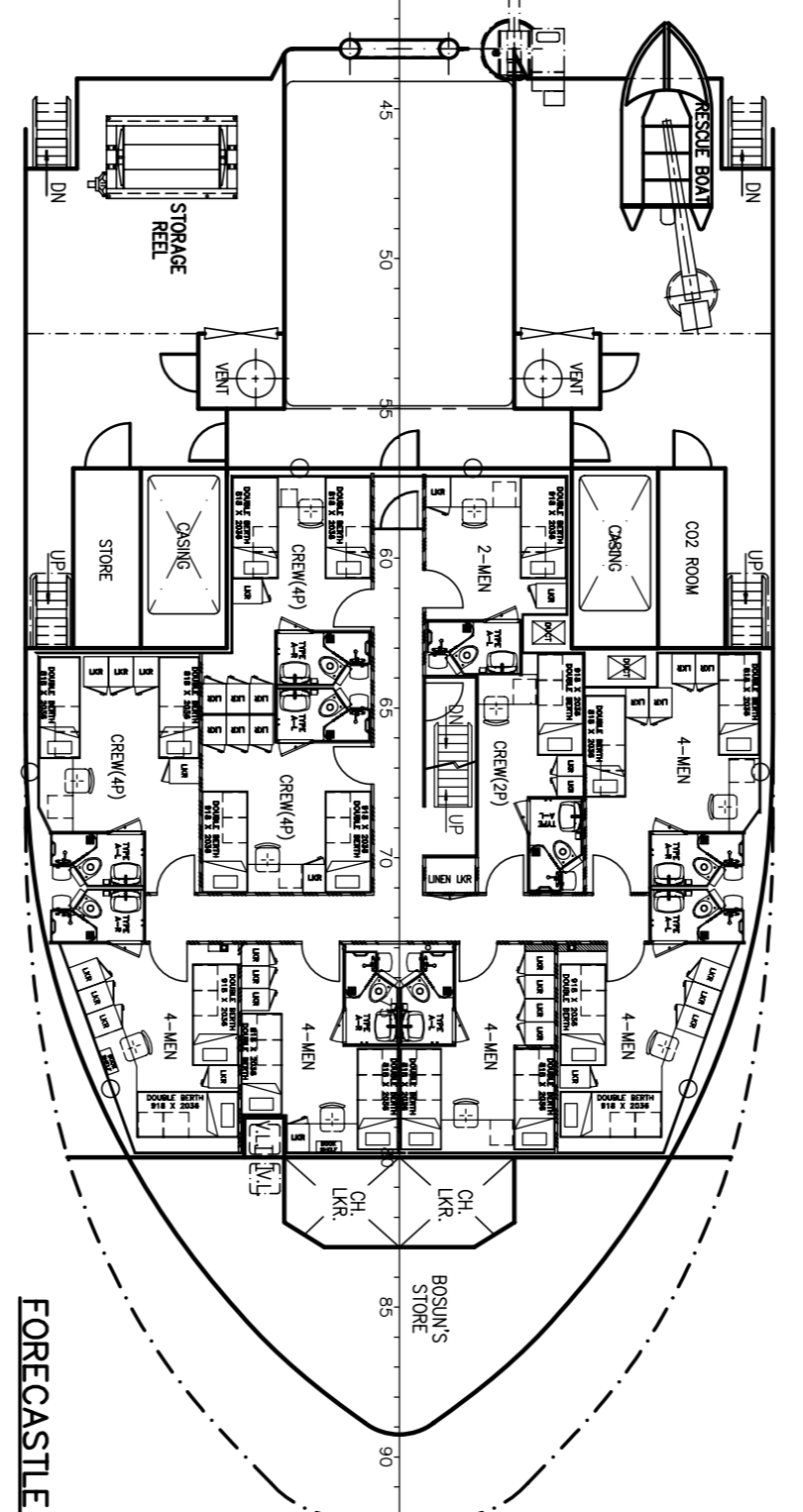
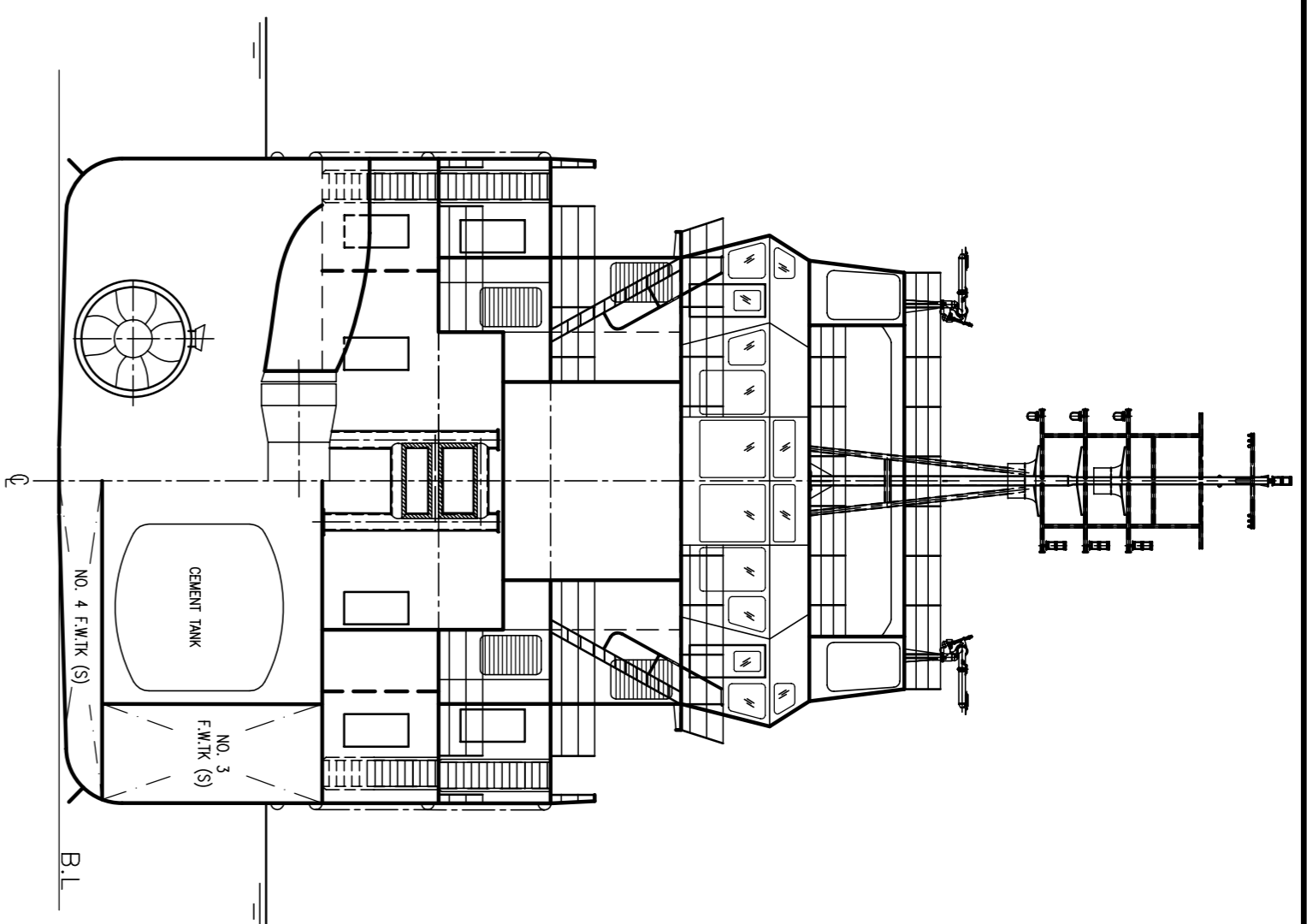
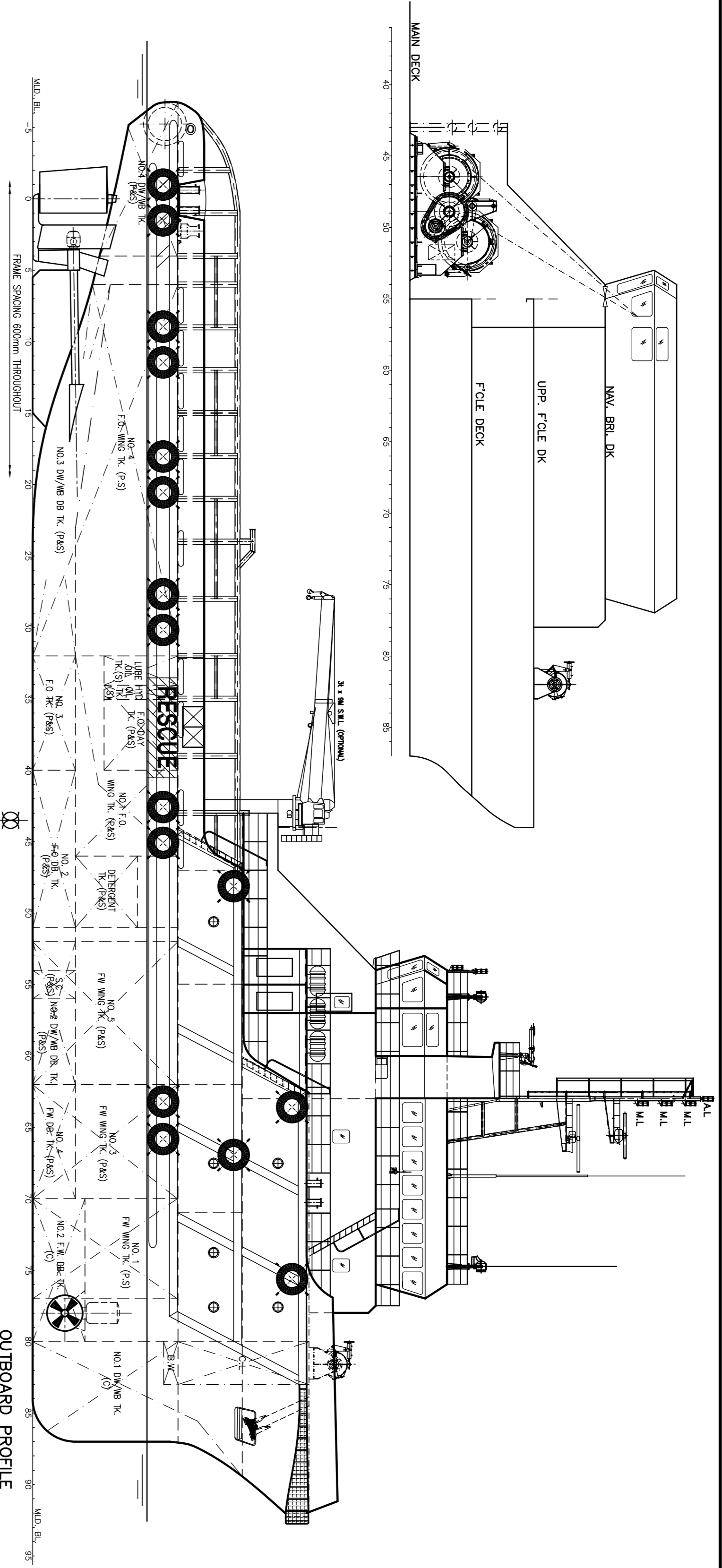
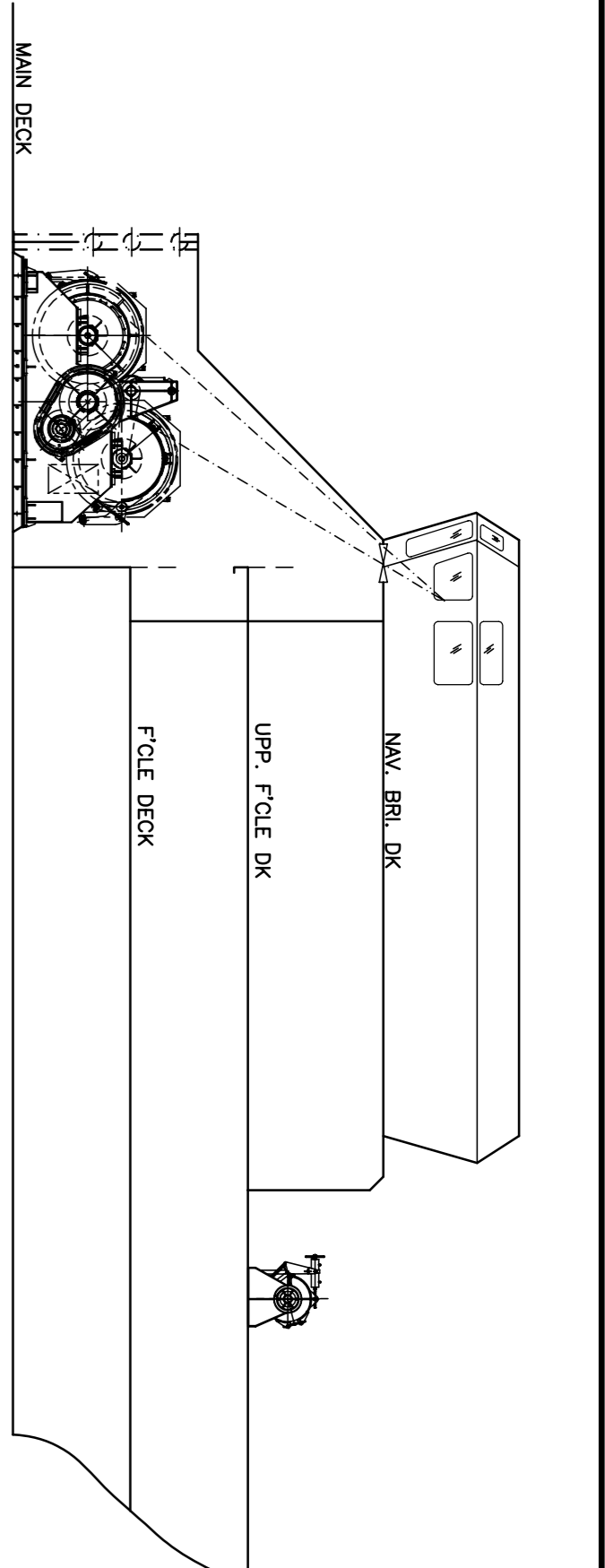
Inflatable Life raft	6 x FRN-SN20 FRP-SV-20R, 20 persons
Fire Hose/Nozzles Spray/Jet	ø11/2"x15mx4pcs.China Scopes 4pcs
Life Buoys	10
Bell	12
Life Jackets C/W	50
Fire Hose Boxes	4
Line Throwing	1
SCBA	4 x Aeris SCBA 30 min
Parachute Flares	12pcs Embarkation
Rope Ladder	6m
Man over Board	2
Orange smoke Signal	2
Fireman Outfit	6
Safety Alarm/Detection System	Electrical Alarm Bell and Signal Lights and Detention System- 1set
EEBD	10 mins x 13 pcs
Fire Buckets	4
Rescue Boat	Dayfer S.L – 6 persons

### FIRE FIGHTING & LSA EQUIPMENT:

External Fire Pump	1500 m <sup>3</sup> / hr x 110 m
CO2 FF Sys Fi	Tech Engineering Services Singapore
Fire Monitor	3000-15000 SGPM – 2 pcs
Water Spray System	Room CO2 – 15 pcs Cylinders x 45 Kgs,
H2S Detectiønn	Fog/ Jet Nozzle
	Fitech Engineering

### ACCOMODATION:

(Fully Air-conditioned)  
Berths 40



**PRINCIPAL DIMENSIONS**

LENGTH (O.A.)	59.250 M
LENGTH (W.L.)	56.000 M
LENGTH (B.P.)	52.200 M
BEAM (M.L.D.)	14.950 M
DEPTH (M.L.D.)	6.100 M
DESIGN DRAFT	4.950 M
FUEL OIL	540 M <sup>3</sup>
FRESH WATER	360 M <sup>3</sup>
DRILL WATER	400 M <sup>3</sup>
MUD	370 M <sup>3</sup>
CLEAR DECK AREA	340 M <sup>2</sup>
DECK CARGO (DECK LOADING = 7.5T/M <sup>2</sup> )	300 TONS
DRY BULK TANKS (4x1650 FT <sup>3</sup> )	187 M <sup>3</sup>
MAIN PROPULSION ENGINE	2 X 2575 BHP
SPEED (TRIALS)	13.0 KNOTS
BOLLARD PULL	62 TONS
COMPLEMENT	42 MEN

CLASS & NOTATION : ABS + A1 Ⓢ TOWING VESSEL, FIRE FIGHTING VESSEL CLASS 1, OFFSHORE SUPPORT VESSEL + AMS

THIS DOCUMENT AND THE INFORMATION IT CONTAINS IS THE PROPERTY OF KHIAM CHUAN MARINE PTE LTD. IT IS NOT TO BE COPIED, REPRODUCED OR TRANSMITTED IN ANY FORM OR BY ANY MEANS, WITHOUT THE WRITTEN CONSENT OF KHIAM CHUAN MARINE PTE LTD.

**KHIAM CHUAN MARINE PTE LTD**  
 15, HILLVIEW TERRACE, SINGAPORE 669226  
 TEL: 6775 4883 FAX: 6725 2319  
 EMAIL: kchi@kchi.com.sg

PROJECT		59m ANCHOR HANDLING TUG/SUPPLY VESSEL			
TITLE		GENERAL ARRANGEMENT			
CLASSIFICATION	DRAWN	CHECKED	SCALE	HULL NO.	REV.
	TCTAO		1:150	KCM/0331(A)-G1	-