

STANFORD CONDOR

4000 BHP Multi-Purpose Supply Vessel (DP1, FiFi 1)



PRINCIPAL PARTICULARS:

Year Built	: 2011
Call Sign	: J8B4375
Official no	: 10848
Class	: ABS+A1 E "Offshore Support vessel, Fire Fighting Class1+AMS+DPS 1
Flag	: SVG
GRT/NRT	: 1393/413

DIMENSION:

Length Overall	: 57.50m
Length WL	: 55.10m
Breadth Moulded	: 13.80m
Depth Moulded	: 5.50m
Draft	: 4.346m
Free Board	: 0.766m

SPEED:

Max. Speed	: 12.0 kts
Consumption	: 14 mt 24 hrs @ 100 % MCR 10 mt 24 hrs @ 85 % MCR

CAPACITIES:

Fuel oil	: 458 cbm
Fresh Water	: 196 cbm
Drill Water	: 369 cbm
Liquid Mud	: 162 cbm
Bulk cement	: 187 cbm(4 x 1650 cuft each)
Lube oil	: 5.3 cbm
Dispersant	: 13.5 cbm
Foam	: 13.5 cbm
Deck Cargo	: 500 mt
Deck Area	: 376 sqm
Deck strength	: 7t/sqm
Deadweight	: 924.51 mt
Freezer	: abt 15 cbm
Cooler	: abt 8 cbm

DISCHARGE CAPACITIES:

Fuel Oil	: 1 x 150 cbm/hr @ 75m head
Fresh water	: 1 x 100 cbm/hr @ 75m head
Drill Water	: 1 x 100 cbm/hr @ 75m head
Liquid Mud	: 2 x 75 cbm/hr @ 75 m head
Bulk cement	: 62 x 13 cbm/hr @ 80 psi

ACCOMMODATION:

One Man cabins	: 4
Two man Cabins	: 1
Four Man Cabins	: 11
Total	: 50 berths
1 x Hospital with 2 Bed, fully air conditioned	

MACHINERY:

Main Engines	: 2 x 2000 BHP @ 1600 rpm, Cummins QSK60-M
Propellers	: Fixed Pitch 360 Azimuths, SRP 1212FP, SCHOTTEL/Gmbh
Bow Thruster	: 1 x 430kw Tunnel Thruster Schottel STT330LK
Generator	: Generator 3 x 350kw/ 415 /3ph / 50Hz Diesel driven, Cummins KTA 19
Emergency Generator	: 1 x 70 kw/ 3 ph / 415V/50Hz diesel driven Cummins 6BT 5.9 DP-1
Engine for FIFI pump	: 746kW/1800rpm,Cummins 38 M1

DECK & AUX EQUIPMENT:

Anchor	: 2 x 1590kg HHP anchors
Chain	: Total length 412.5m x 34mm U2 stud link Chains
Windlass and 2 warping drums	: 1 x electro hydraulic with 2 cable lifter
Winch Rating	: 9 mt @ 12m/min for 36mm dia chains
Capstan	: 2 x 5mt @ 15m/min electro hydraulic
Deck Crane	: Sormec Marine Crane M460/3S SWL 25T @ 12M Radius/ 5T @ 36.5 M Radius 25T

RADIO AND NAVIGATION EQUIPMENT:

GMDSS (Area 3)	2 x VHF-DSC Radio Telephone
2 x Inmarsat C with EGC	1 x EPIRB
1 x MF/HF- DSC Radio Telephone	3 x VHF Portable radios
2 x SART	1 x VHF/FM Radio Telephone
1 x Navtex Receiver	2 x 96m X-band Radar
1 x A.I.S	1 x Magnetic Compass
1 x Kongsberg Joystick Control	1 x Autopilot
1 x SSB Radio	1 x Doppler Speed Log
1 x GPS Plotter	1 X PA/ talkback system
2 x Gyrocompass	2 x Anemometer
1 x Weather Fax receiver	1 x Echo Sounder
1 X Self Powered Telephone	1 X Auto Telephone System
1 X VSAT	

FIRE FIGHTING AND LSA EQUIPMENT:

EXTERNAL FIFI	: 2 X 1500 cbm/hr@14bar/140 mic /1800 RPM
Pump	: 2 X1200 cbm/hr@12 BAR (with remote control) throw length 120m / throw height 45m
Monitors	: 1 Monitor fitted with double barrel for foam discharge
1 x Water Spray Curtain around the Hull & Deckhouse	
Engine room water Spray System	
1 x BA recharging compressor of 75lts/min @ 200 bar (optional)	

LIFE SAVINGS :

6 x 25 men inflatable Life rafts 2 x MOB-Light Smoke Signal	
1 X Rigid Inflatable Rescue Boat for 6 persons (with outboard motor) 5 x 1000W Floodlights	
2 x 2000W Searchlights 10 X EEBD 1 x daylight Signaling light	
6 X Medical Oxygen Resuscitator	

AUXILIARY EQUIPMENT:

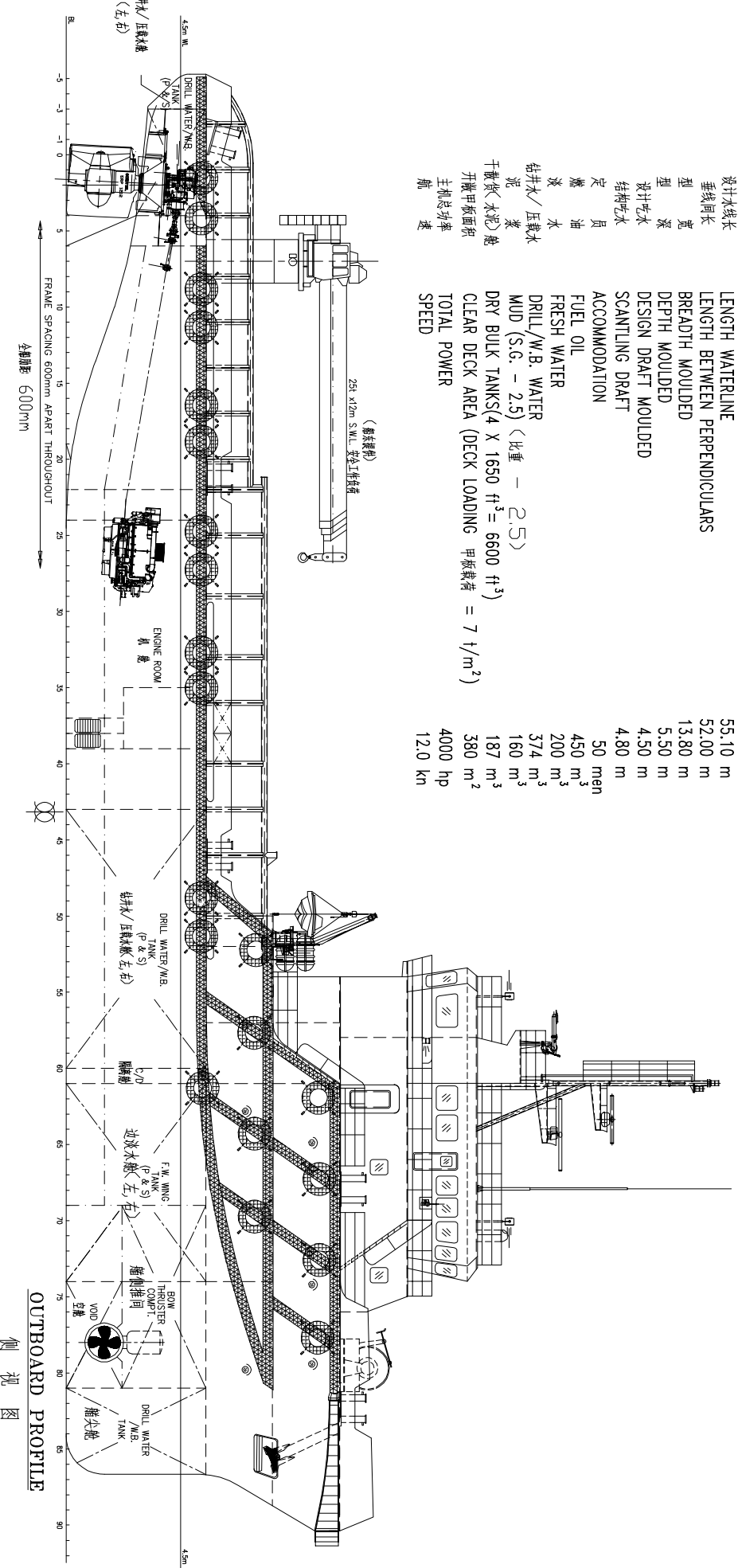
1 x Sewage Treatment Plant suitable for 50 men , ST4A,6000L/day	
1 x 5T/day reverse osmosis Fresh Water Maker , Aquamar Electric	
1 x Air Compressor 9cbm/h @ 10 bar, Atlas Copco LE15-10, Belgium	
1 x Oily Bilge Water Separator , Capacity 1cbm/hr	
1 x Fresh Water Hydrophore Plant, 5000L CSSC(Nantong), China	
Cement System	: 2 sets of compressors, 5.6kg/cm2 (80psi) working pressure, 13cbm/ min

主 尺 度

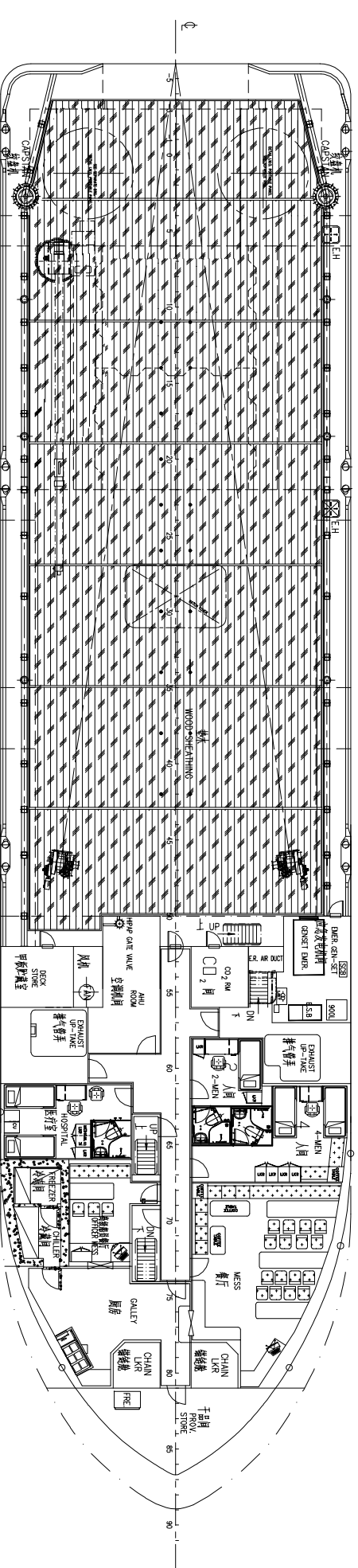
总长 57.50 m
设计水线长 52.00 m
垂线间长 13.80 m
型宽 5.50 m
型深 4.50 m
设计吃水 4.80 m
结构吃水 50 men
定燃油 450 m³
淡水 200 m³
压载水 374 m³
泥 160 m³
干散货(水渣)舱 187 m³
开舱甲板面积 380 m²
主机总功率 4000 hp
速 12.0 kn

PRINCIPAL DIMENSIONS

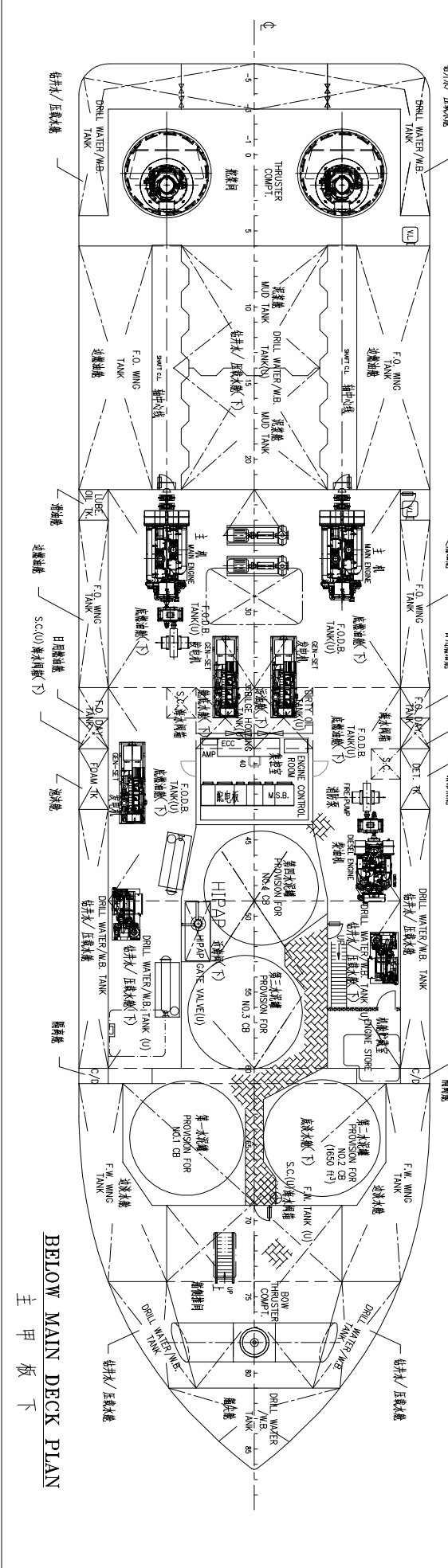
LENGTH OVERALL 57.50 m
LENGTH WATERLINE 52.00 m
LENGTH BETWEEN PERPENDICULARS 13.80 m
BREADTH MOULDED 5.50 m
DEPTH MOULDED 4.50 m
DESIGN DRAFT 4.80 m
SCANTLING DRAFT 50 men
ACCOMMODATION 450 m³
FUEL OIL 200 m³
FRESH WATER 374 m³
DRILL /W.B. WATER 160 m³
MUD (S.G. - 2.5) (比重 - 2.5) 187 m³
DRY BULK TANKS(4 X 1650 ft³ = 6600 ft³) 380 m²
CLEAR DECK AREA (DECK LOADING 甲板堆存 = 7 t/m²) 4000 hp
TOTAL POWER 12.0 kn
SPEED



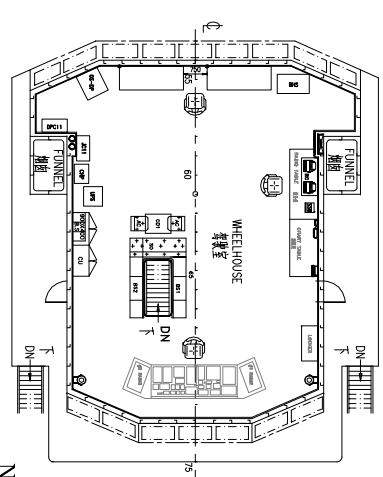
OUTBOARD PROFILE
侧视图



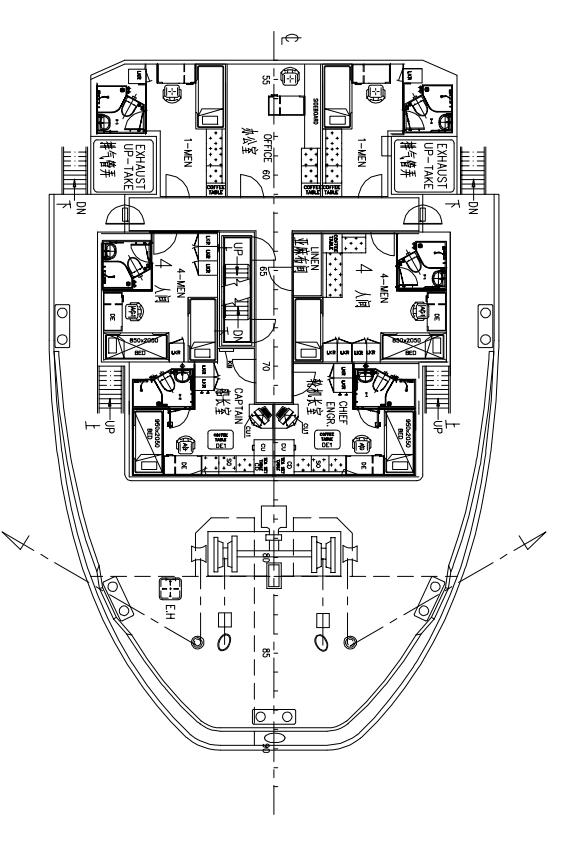
MAIN DECK PLAN
主甲板平面图



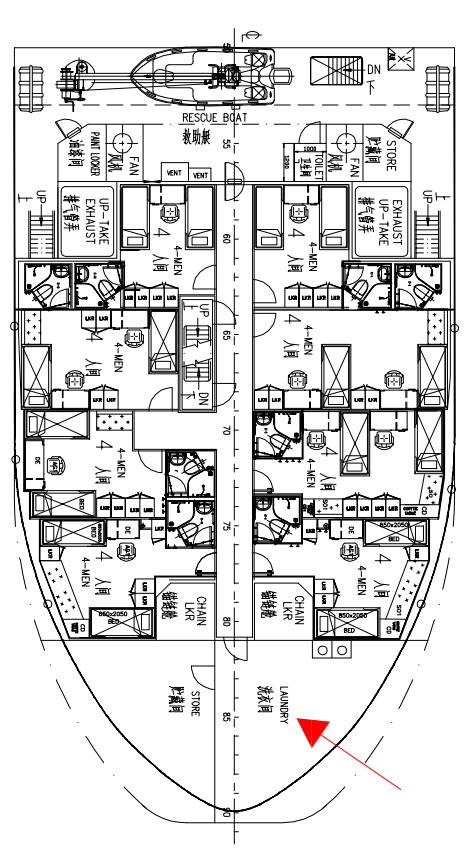
BELOW MAIN DECK PLAN
主甲板下



NAV. BRIDGE DECK
驾驶室甲板



UPPER FORECASTLE DECK
上搭楼甲板



FORECASTLE DECK
船楼甲板

ITEM	DETAILS OF MODIFICATION	BY	DATE

CONSULTANT
KHIAM CHUAN MARINE PTE LTD.
15, HILLVIEW TERRACE, SINGAPORE 669226
TEL: 67753383 (6 LINES) FAX: 67753788
EMAIL: khiamchuan@com.com.sg

PROJECT
58m UTILITY/SUPPLY VESSEL

TITLE
GENERAL ARRANGEMENT

CLASSIFICATION	HULL NO.
DRAWING CHECKED	MMW613-4/5/6/7
SCALE	DRAWING NUMBER
1:125	KCM/0351(A)-G1
DATE	REV.
21.05.08	

THIS DOCUMENT AND THE INFORMATION IT CONTAINS IS COPYRIGHT AND REMAINS THE PROPERTY OF KHIAM CHUAN MARINE PTE LTD. IT IS NOT TO BE COPIED OR REPRODUCED IN ANY MANNER WITHOUT WRITTEN CONSENT.