

STANFORD SEAL



STANFORD MARINE

5,000 BHP ANCHOR-HANDLING TUG (60 TONS BP)



BUILT:

Year Built	2007
Classification	Bureau Veritas
Flag	SVG
Off No. / Call sign	J8B4157
Builder	Sarawak ,Malaysia
Registry	Kingsstown

PRINCIPAL DIMENSION:

Length Overall	38.00 M
Length waterline	36.30 M
Length B.P.	33.40 M
Breadth Moulded	11.8 M
Depth Moulded	4.80M
Designed Draft	3.80M
GRT/NRT	497/149

MACHINERY / PROPULSION:

Main Engine	2 x Niigata Japan Model:6MG28HX
Output Hp	1838kw @750 RPM
Gear Box	2 x MGN5023z-2 units
Gear Ratio	3.20.1
Fresh / Seawater Hydrophone Pump	2 x Myers HC2-75-2 units
Fitted Propeller	2 x ø2500x2575 Magnetic Bronze
Kort Nozzle	2 x ø2500 Steel
Fuel Oil Cargo Pump	IN600
Tail Shaft	2 x ø250xL7M Forged Steel
Fresh Water Cargo Pump	MU50-200A-
Intermediate Shaft	2 x ø210xL2300 Forged Steel C/W SKF
Generator	Cummins 6CTA 8.3-DCM C/W 150kw
Bilge Pump / Fire Pump	MU50-160A
Lube oil Purifier C/W Electric Heater	Mitsubishi SG-10G
Air Compressor	2 x LHC-33
Sludge Oil Pump	IN40-1unit
Gear Box lube oil STB Pump	2 x MHU ø74
ME Towing Winch / Shaft Jaw/	1 unit each
Fuel Oil Flow meter	FRP105/BAA/04x2

SPEED:

Speed	10knots
Endurance	30 days
BP	60 tones
Range	12knots

CARGO DECK EQUIPMENT:

Anchor Windlass	ME10TWT 450-10
Tugger Winch	2 x ME 10 THTGW
Capstan	2 x ME5THVC
Anchor Chain	34mm x 27.5m U2-13 Length
Towing Winch	Double Drum Waterfall
Stockless Anchor	2 x 1020Kgs
Shaft Jaw/Tow pin	200THTP
Deck Crane	ME 2 Ton 9m Telescopic
Stern Roller	ø1400 x4000 Steel Stern Roller -

PUMPS:

Air-cond Cooling Pump	2
Freeze / Chiller Cooling Pump	1
Towing Winch Cooling Pump	1 x Itur 50/25
Hydrophone Plants Pump	1 x HC2-75
Fresh Water Cargo Pump	1 x MU50-200A
Emergency Fire Fighting	1 x MU32-160
FIFI / Fire Fighting Pump	ENM 350-550 C/W Gear
Fuel Oil Transfer Pump	1 x IN350
Main Engine Lube boil STB Pump	2 x IN600

CAPACITY

Fuel Oil	300 T
Fresh Water	50 T

RADIO & NAVIGATIONAL EQUIPMENT:

Magnetic Compass	M150 Reflector
VHF Radio Telephone	1com M-302
Gyro Compass	Standard 22 Compact
SSB Radio Telephone	Furuno SSB FS1503
Autopilot	Nautopilot NP60
Navigation Radar	NSC1810/6xu
Speed Log	7070L
NavTEX Receiver	ICS Nav 5
Echo Sounder	ED-165
Walkie Talkie	2 x ICom GMDSS GM1600
Global Positioning System	MX500
Engine Telegraph Automatic	EOT-706
Identification System	Mcmurdo M-2
Navigation Light Panel	NL-RM67-01
Horn	5.413
GMDSS Radio System	Raytheon A3
Search Light	2 x Francis ø12"
EPIRB	MHz5 1MO approval
Tracking System	DMR-200
Radar Transponder	9GHz 1MO approval
Mini M	Sailor TNT TT3064A

SAFETY & EQUIPMENT:

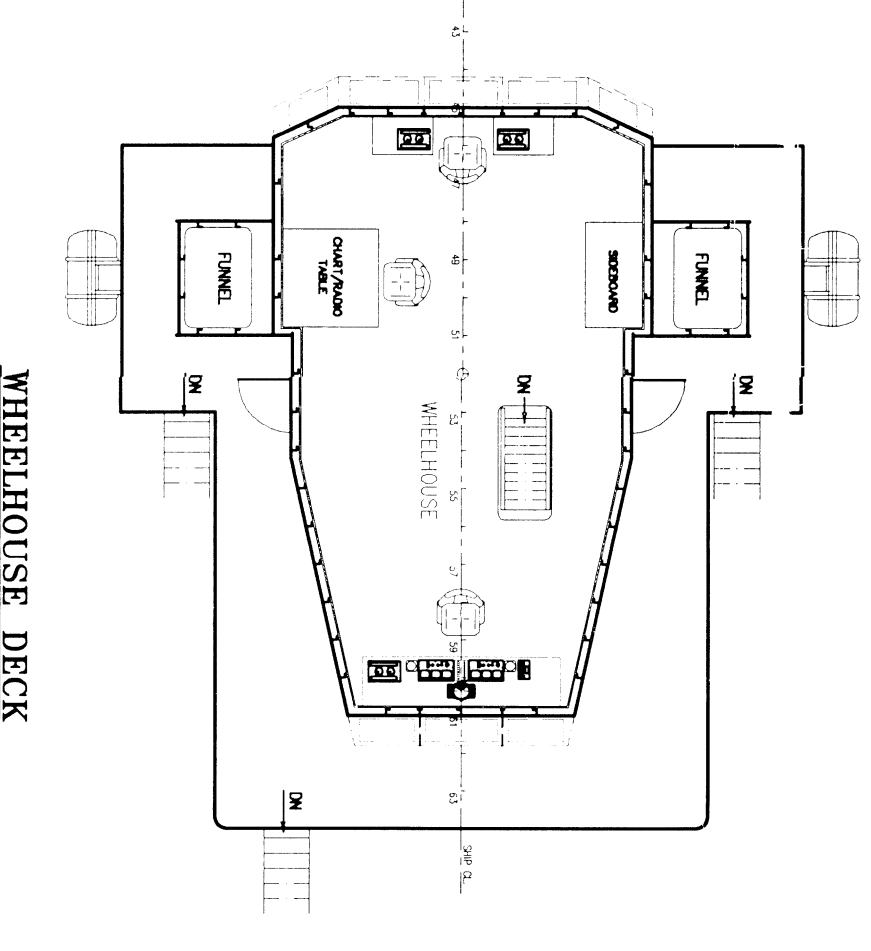
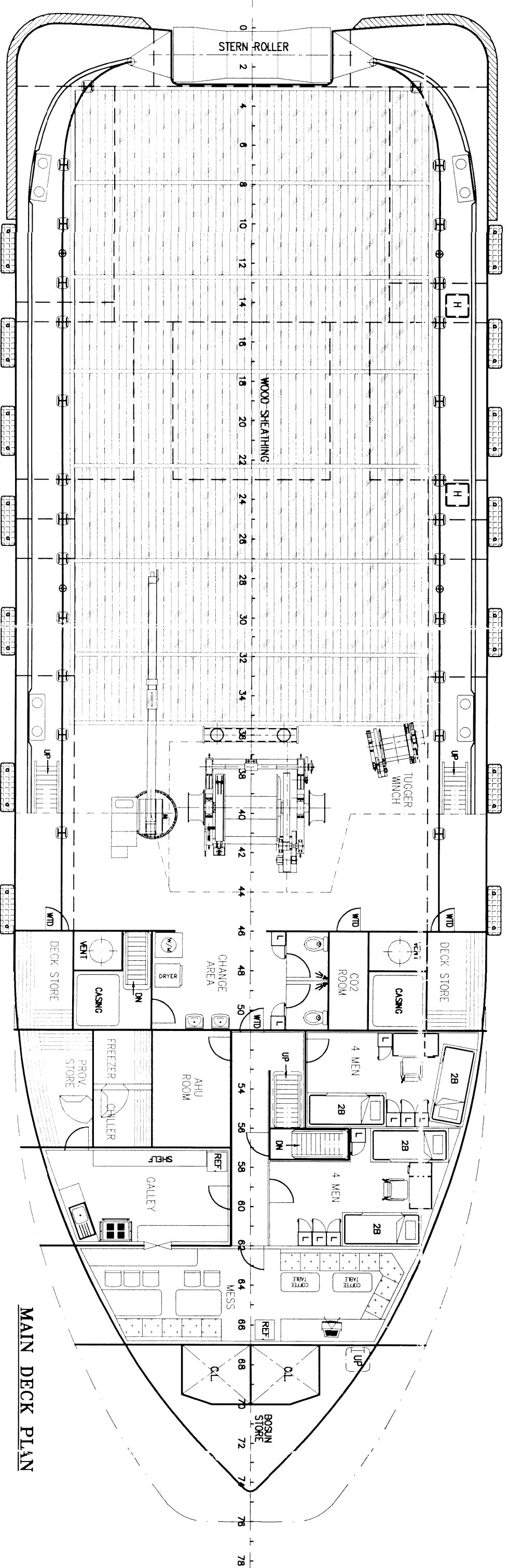
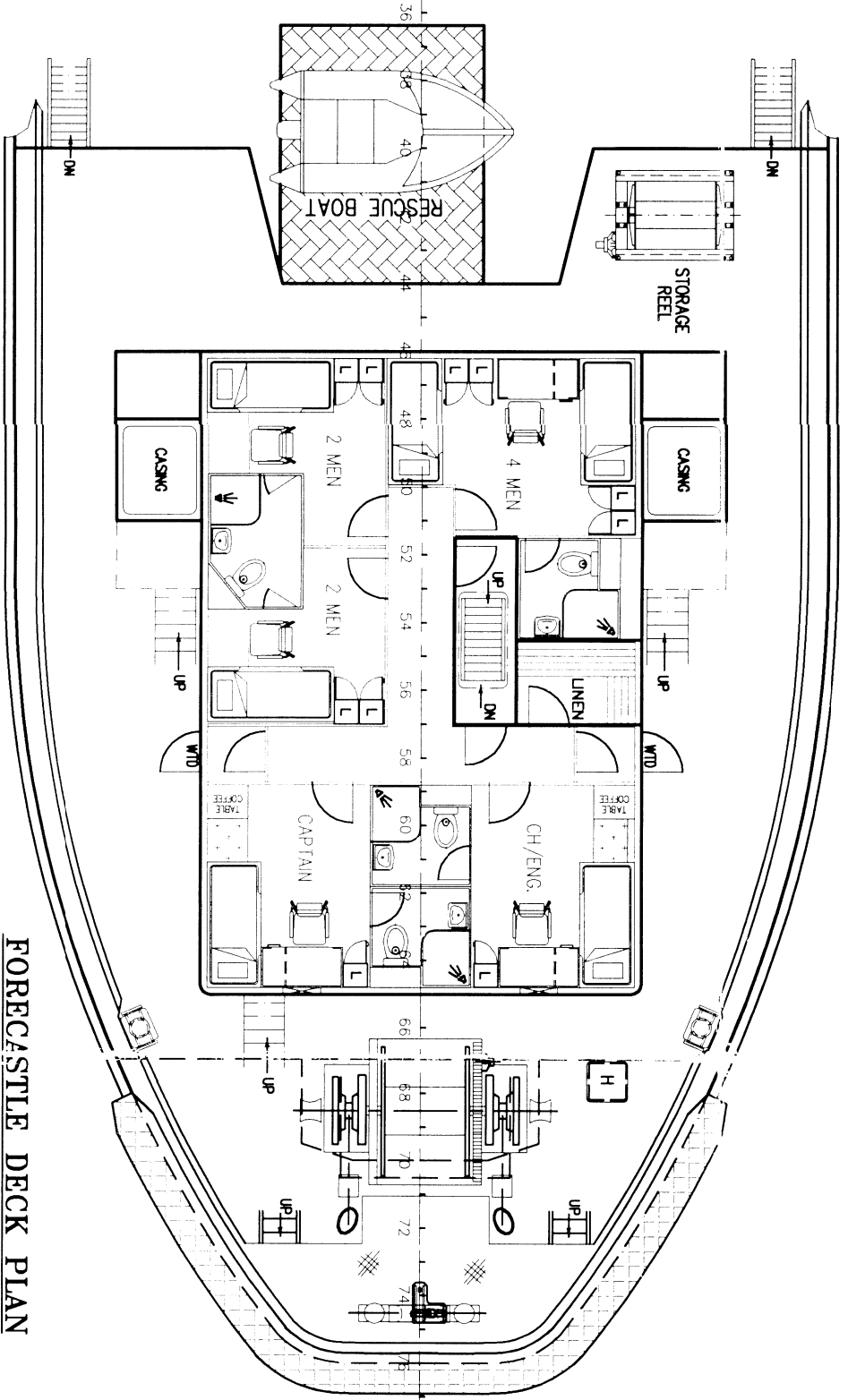
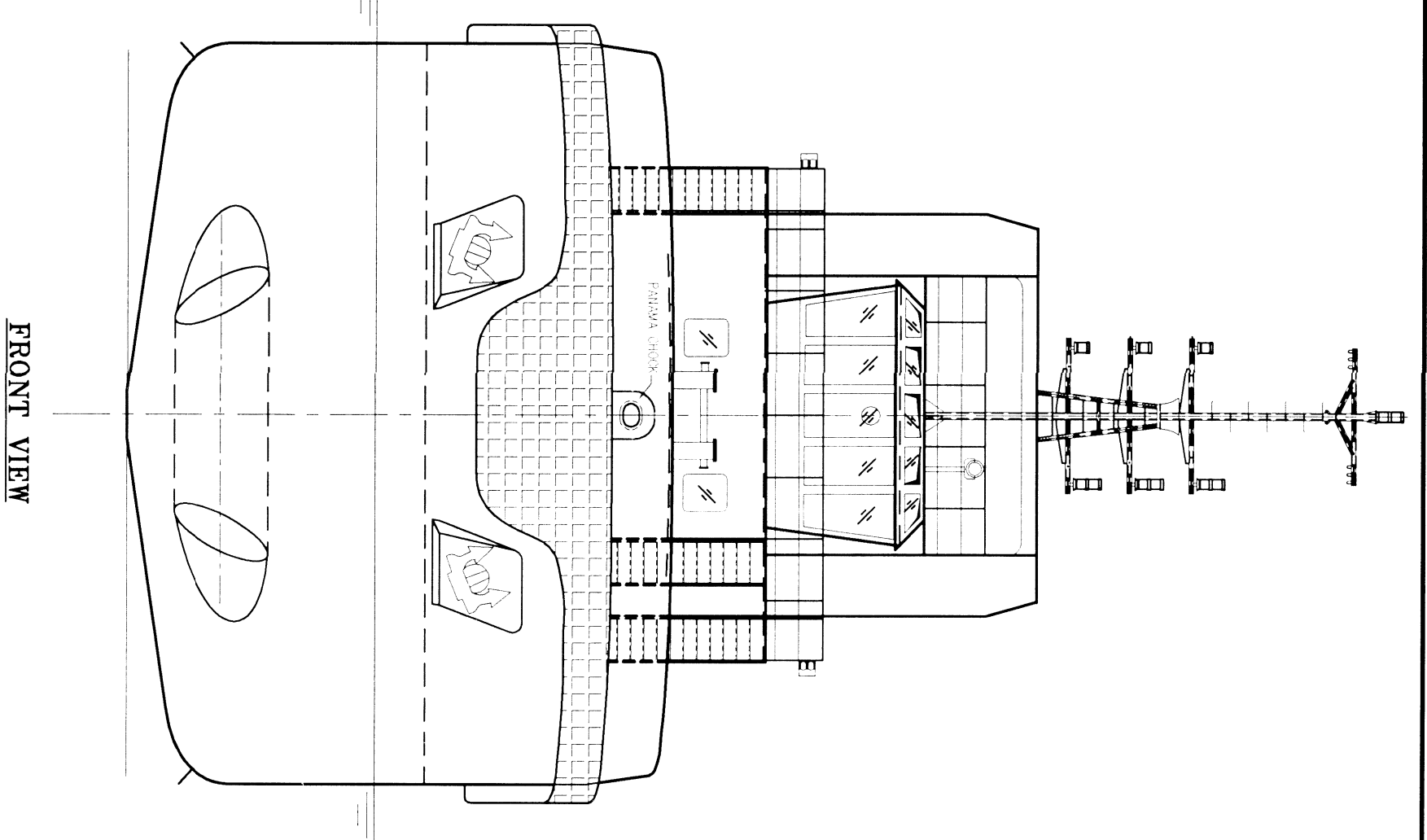
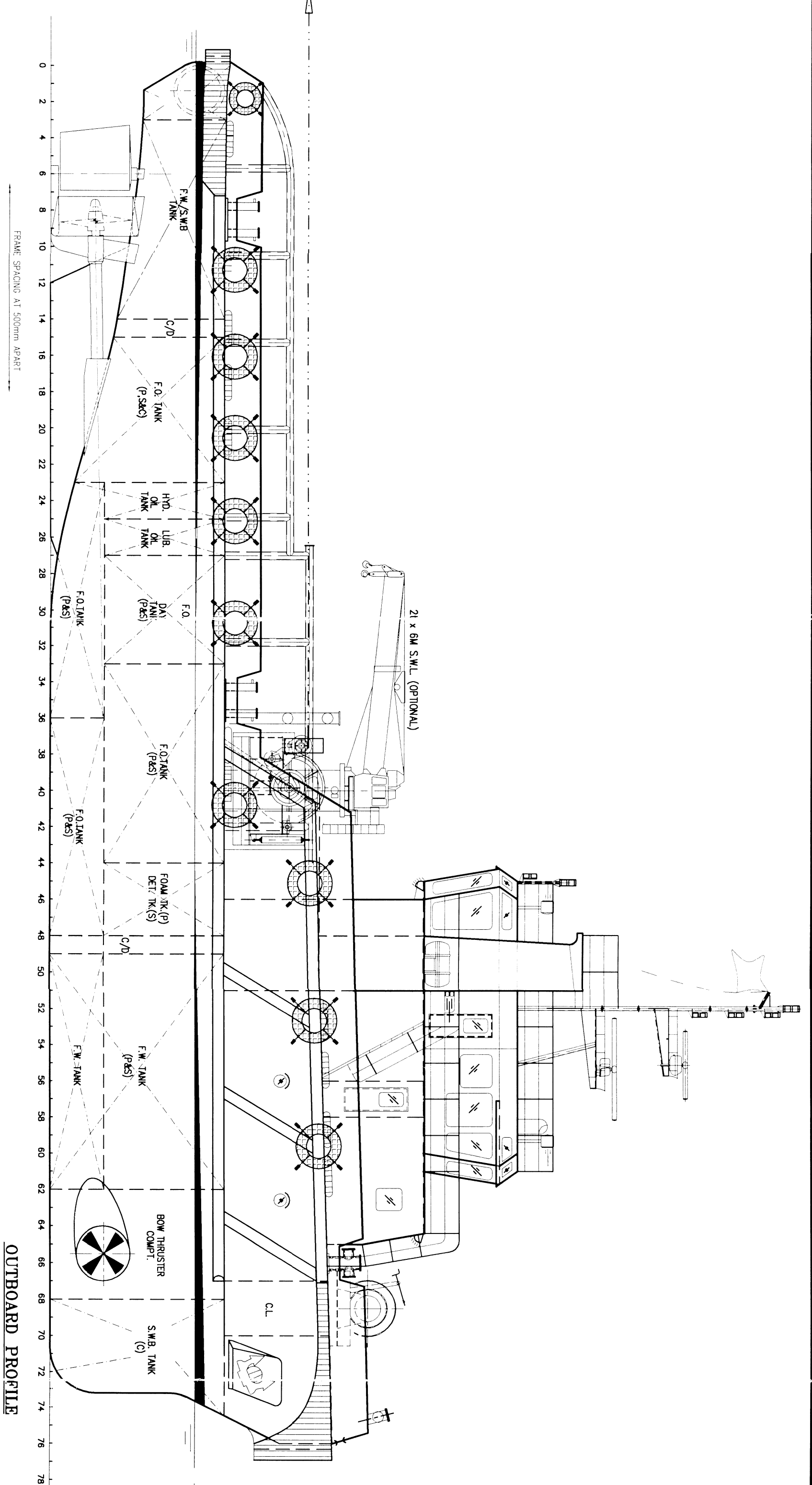
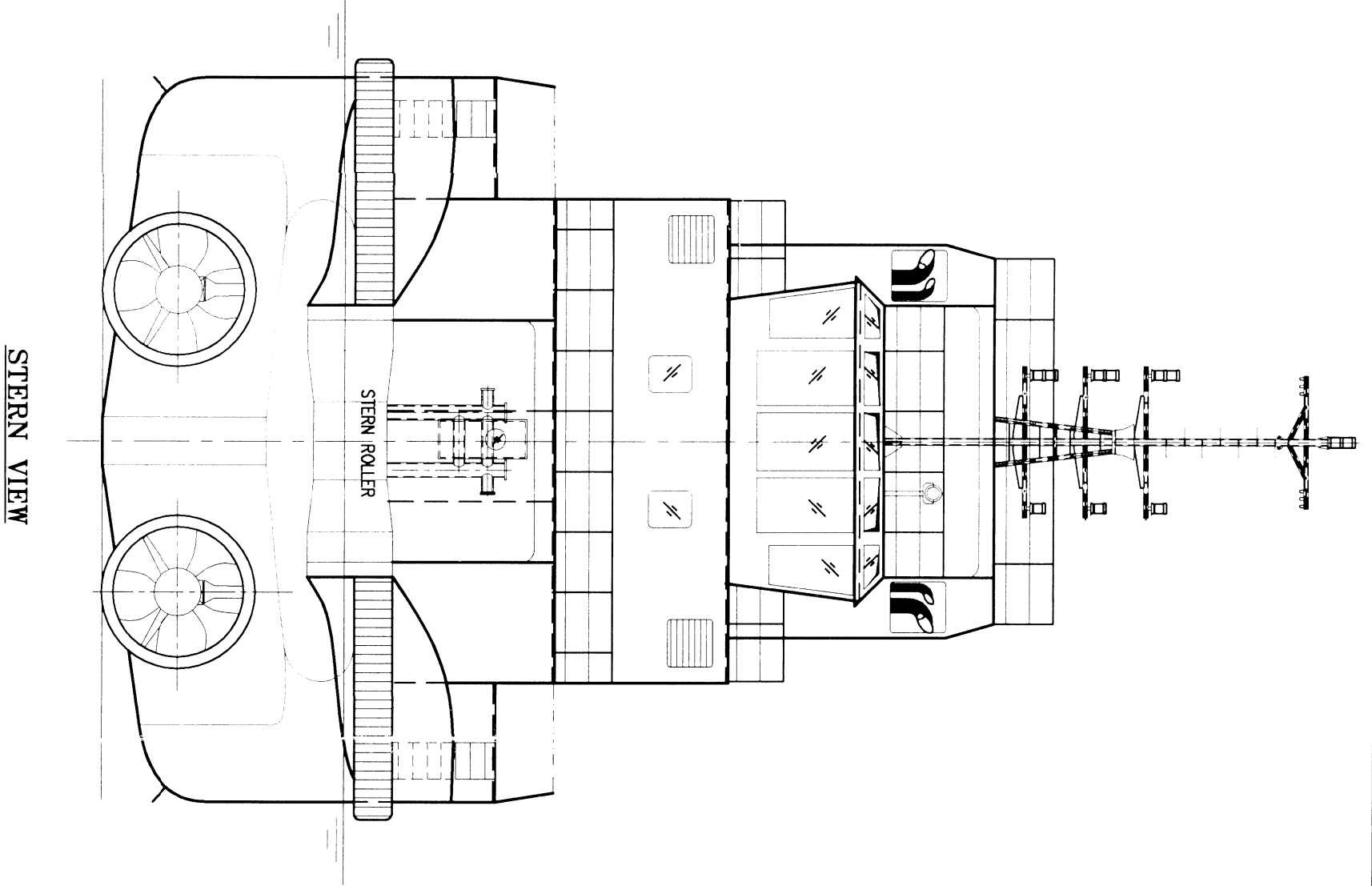
Inflatable Life raft	2
Life Buoys	4
Life Jackets C/W	24
Line Throwing	1
Parachute Flares	12
Man Over Board	2
Fireman Outfit	1
Sand Boxes	2
Fire buckets	4
Fire Hose/Nozzles Spray/Jet	4 x ø1½"x15m
Scopes	4
Bell	1
Fire Hose Boxes	4
Life buoy C/W Light & Life Line	4
Embarkation Rope Ladder	1
Red Hand Flare	6
Safety Alarm/Detection System	1

FIRE FIGHTING & LSA EQUIPMENT:

CO2/Foam	Cylinders & Foam One Tank, Oil Dispersant Spray System
FIFI-1 COUPLING with Main Engine C/W	FFS Fire Fighting System As Moss Norway.FFS1200/300
1 unit Fire Pump	Monitor 1200m3/h

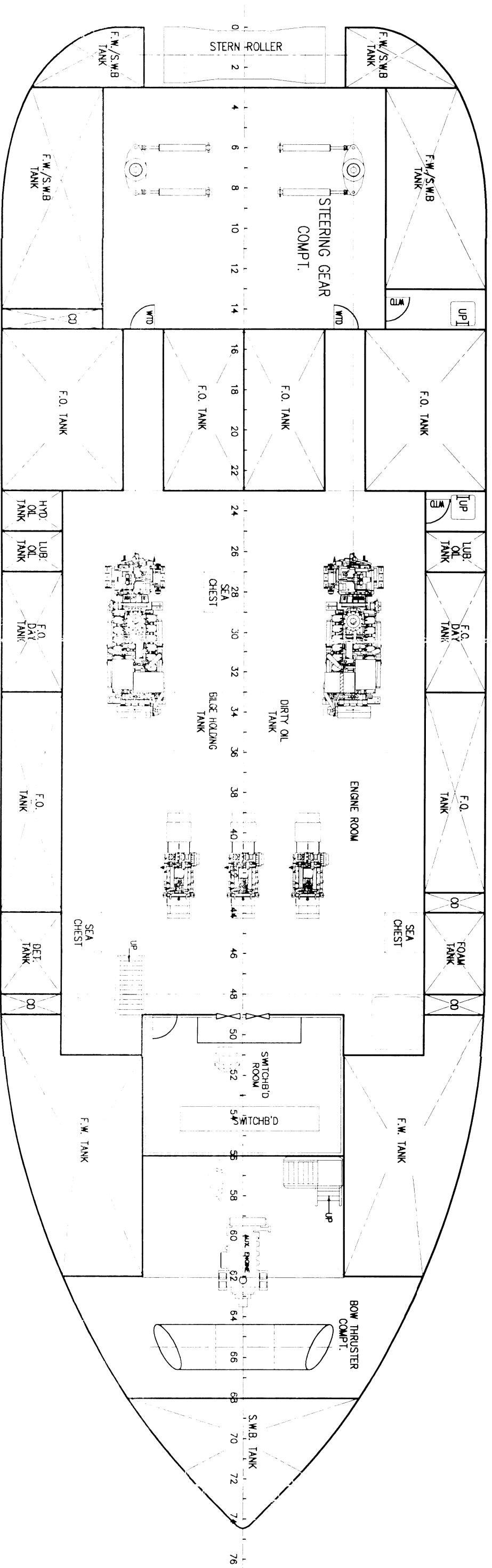
ACCOMODATION:

(Fully Air-conditioned)	
Master	1 x 1 berth
C/Engineer	1 x 1 berth
Officers	2 x 1 berth
Engineers	2 x 1 berth
Crews	4 x 3 berth
	(Total for up to 18 Persons)

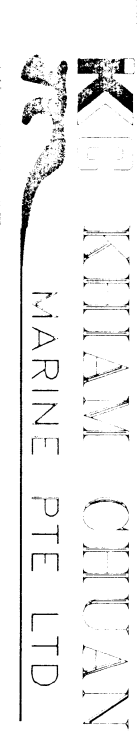


PRINCIPAL DIMENSIONS

LENGTH OVERALL 38.00 M
 LENGTH WATERLINE 36.50 M
 LENGTH B.P. 33.40 M
 BREADTH MOULDED 11.80 M
 DEPTH MOULDED 4.80 M
 MAX. DRAFT MOULDED 3.80 M
 COMPLEMENT 18 MEN
 FUEL OIL 301.0 TONNES
 FRESH WATER 151.0 TONNES
 TOTAL POWER 5100 BHP
 TRIAL SPEED 11.0 KNOTS
 BOLLARD PULL (AHEAD) 61.0 TONNES



THIS DOCUMENT AND THE INFORMATION IT CONTAINS IS
 CONFIDENTIAL AND REMAINS THE PROPERTY OF
 STANFORD MARINE PTE LTD. IT IS TO BE KEPT
 SECRET AND NOT DISCLOSED TO ANY THIRD
 PARTY WITHOUT THE WRITTEN AUTHORIZATION OF
 STANFORD MARINE PTE LTD.

 <p>KIM KIAM GIUAN MARINE PTE LTD</p> <p>11, 11-11/12, 11-11/13, 11-11/14, 11-11/15, 11-11/16, 11-11/17, 11-11/18, 11-11/19, 11-11/20, 11-11/21, 11-11/22, 11-11/23, 11-11/24, 11-11/25, 11-11/26, 11-11/27, 11-11/28, 11-11/29, 11-11/30, 11-11/31, 11-11/32, 11-11/33, 11-11/34, 11-11/35, 11-11/36, 11-11/37, 11-11/38, 11-11/39, 11-11/40, 11-11/41, 11-11/42, 11-11/43, 11-11/44, 11-11/45, 11-11/46, 11-11/47, 11-11/48, 11-11/49, 11-11/50, 11-11/51, 11-11/52, 11-11/53, 11-11/54, 11-11/55, 11-11/56, 11-11/57, 11-11/58, 11-11/59, 11-11/60, 11-11/61, 11-11/62, 11-11/63, 11-11/64, 11-11/65, 11-11/66, 11-11/67, 11-11/68, 11-11/69, 11-11/70, 11-11/71, 11-11/72, 11-11/73, 11-11/74, 11-11/75, 11-11/76, 11-11/77, 11-11/78, 11-11/79, 11-11/80, 11-11/81, 11-11/82, 11-11/83, 11-11/84, 11-11/85, 11-11/86, 11-11/87, 11-11/88, 11-11/89, 11-11/90, 11-11/91, 11-11/92, 11-11/93, 11-11/94, 11-11/95, 11-11/96, 11-11/97, 11-11/98, 11-11/99, 11-11/100</p>		TEL: 65-67546666 FAX: 65-67546667 EMAIL: kimg@stanfordmarine.com
38m TWIN SCREW ANCHOR HANDLING TUG		
GENERAL ARRANGEMENT		
PROJECT NO: 11-11/1	DATE: 11-11-11	
DRAWN BY: [Name]	CHECKED BY: [Name]	
SCALE: 1:100	PROJECT NO: KIM/258611/11	